

**We are
committed to
excellence**

YOUR TRUSTED PARTNER



Jiangsu Shengrong Power Machinery Co.,Ltd

Address: East side of Gong 7 Road, Maba Industrial zone, XuYi District, Huai

An, Jiangsu, China

Phone: +86 199 0150 8088

Email: marson@generatorsr.com

Website: www.generatorsr.com



SR P L E T E R S C O

01 About SR Power

05 Diesel Engine

07 Open Frame Generator

13 Silent Diesel Generator

19 Super Silent Diesel Generator

21 Industrial Diesel Generator

45 Welding Generator

47 Water Pump

What We Offer

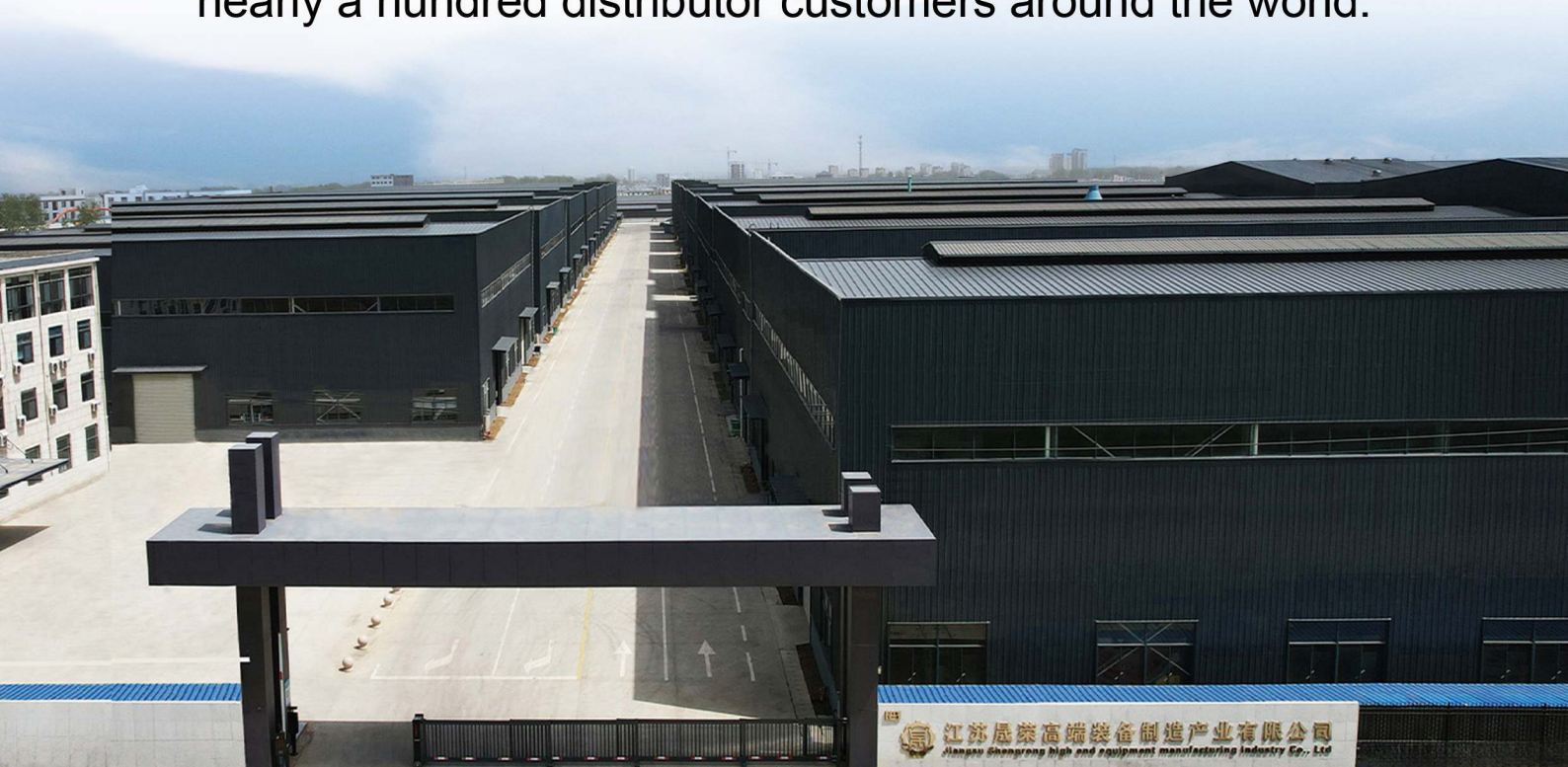
Shengrong Power specializes in high-performance diesel engines, generators, and water pumps. With advanced technology and a commitment to reliability, we deliver tailored power solutions that ensure efficiency, durability, and long-term success for our clients.



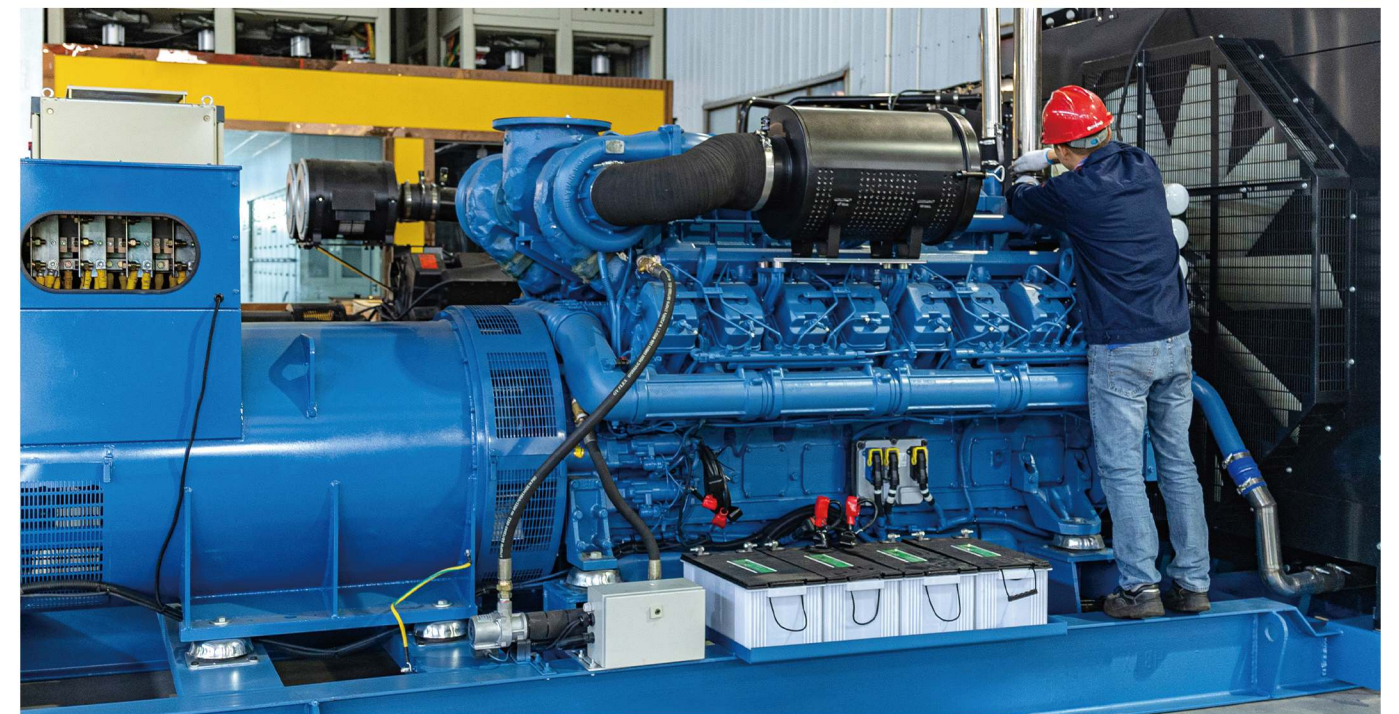
Who Are We

Jiangsu Shengrong Power Machinery Co.,Ltd is located in Huai An, Jiangsu Province, near Shanghai. We are a leading OEM manufacturer of diesel engines, air-cooled and water-cooled diesel generators, diesel water pumps, and etc. We are instrumental in offering our engineers and architects have expertise in working with multinational companies. We guarantee complete assistance in power factories and related areas from planning to production. We offer the following services are power factories consultancy and suppliers of diesel generator sets of 3-2000kw.

Our factory covers an area of over 200000 square meters, with 6 production lines and an annual output of 100000 diesel engines. Having multiple invention patents, as well as comprehensive CE certificates and ISO9001. At present, we have exported to more than 50 countries and cooperated with nearly a hundred distributor customers around the world.



**Manufactured with Precision, Trusted Worldwide:
Your Reliable Manufacturer.**



DIESEL ENGINE

Low Vibration and Low Noise

The drive gear design is incorporated into the latest diesel engine which will greatly reduce vibration and noise.

Excellent Fuel System

The precision machined and precisely timed injection pump and the direct-injection design leads to lower fuel consumption and reduced exhaust emissions.

Easy Start & High Power Output

Excellent design and high quality fuel pump to assure the engine easy and high output.

Easy Maintenance, Low Operation Cost

The engines are designed as Light weight and compact construction. All spare parts are available with warranty.



Single-Cylinder Diesel Engine



MODEL		SD173F(E)	SD178F(E)	SD186FA(E)	SD188FA(E)
Engine type		Single-cylinder, vertical, 4-stroke, air-cooled			
Combustion System		Direct injection			
Bore*stroke	mm	73x59	78x64	86x72	88x75
Displacement	ml	247	296	418	456
Compression ratio		20:1	20:1	20:1	20:1
Rated speed	rpm	3000/3600	3000/3600	3000/3600	3000/3600
Rated power	kW	3.5/3.8	3.7/4.0	5.8/6.6	6.5/7.2
	hp	4.8/5.2	5.0/5.5	8.0/9.0	8.9/9.8
Starting system		Recoil or electric			
Fuel tank Capacity	L	2.5	3.5	5.5	5.5
Lube Oil Capacity	L	0.75	1.1	1.65	1.65
Fuel consumption rate	g/kw.h	275/280	275/280	275/280	275-280
Fuel type		DIESEL: 0 # (summer) -10 # (winter) -35 # (chillness)			
Lube oil type		SAE10W30(CD grade or above)			
Overall dimensions (L*W*H)	mm	420*400*455	480*460*510	500*460*545	500*460*545
Net weight	kg	27/32	33/38	48/53	49/54
MODEL		SD192F(E)	SD195F(E)	SD1100FE	SD1105FE
Engine type		Single-cylinder, vertical, 4-stroke, air-cooled			
Combustion System		Direct injection			
Bore*stroke	mm	92x75	95x75	100x85	105x85
Displacement	ml	499	532	667	760
Compression ratio		20:1	20:1	20:1	20:1
Rated speed	rpm	3000/3600	3000/3600	3000/3600	3000/3600
Rated power	kW	7.6/8.2	8.0/8.7	10.0/11.0	12.0/12.5
	hp	10.0/11.2	11.0/11.8	13.5/15.0	16.0/17.0
Starting system		Recoil start or electric start		Electric start	
Fuel tank Capacity	L	5.5	5.5	5.5	5.5
Lube Oil Capacity	L	1.65	1.65	2	2
Fuel consumption rate	g/kw.h	275-280	275-280	275-280	275-280
Fuel type		DIESEL: 0 # (summer) -10 # (winter) -35 # (chillness)			
Lube oil type		SAE10W30(CD grade or above)			
Overall dimensions (L*W*H)	mm	500*460*545	500*460*545	560*528*650	560*528*650
Net weight	kg	50/55	49/54	58	60

OPEN FRAME GENERATOR

Sunrong open frame generator set has the support of working professional everywhere. This diesel powered generator line is produced in three versions to accommodate the most common applications. All offer great durability, low vibration, quiet operation, and recoil or convenient electric starting.

Features

Delivering the power you need

Powerful, flexible, versatile, reliable, durable; Sunrong open frame generator sets have it covered on every level.

High conversion rate

100% copper alternator, class F insulation, high conversion rate.

Stable output

Smart AVR controller ensures stable voltage and less voltage waveform distortion.

Control panel

All operating functions of the generator sets are on the panel. A digital readout displays operating parameters in real time such as output voltage and amperage. Circuit breakers protect the generator from overloads.

Easily portable

An open frame configuration means it's easy to handle and store when not in use. Wide application various output sockets are available to meet all customers' requirements.



Technical Data



MODEL		SDG3500E		SDG6500E	
Rated frequency	Hz	50	60	50	60
Rated voltage	V	220, 230, 240, 110/220, 127/220, 115/230, 120/240, 220/380, 230/400, 240/415			
Rated power	Kw	2.6	2.8	4.5	5
Max. power	Kw	3	3.2	5	5.5
Phase number		Single phase		Single phase / three phase	
Excitation mode		Self-excitation and constant voltage (with AVR)			
Power factor	cosΦ	1.0		1.0(0.8)	
Insulation grade		F		F	
Fuel capacity	L	12.5		12.5	
Engine model		SD178F(E)		SD186FA(E)	
Engine type		Single cylinder, 4-stroke, air cooled, vertical			
Starting system		Manual / Electric			
Bore x stroke	mm	78*64		86*72	
Displacement	L	0.296		0.418	
Compression ratio		20:1		20:1	
Rated rotation speed	rpm	3000/3600		3000/3600	
Rated power	kW	3.7/4		5.8/6.6	
Lube oil capacity	L	1.1		1.65	
Fuel consumption	g/kW.h	275/280		275/280	
Fuel type		DIESEL: 0# (summer) -10# (winter) -35# (chillness)			
Lube oil type		About CD grade or SAE 10W-30, 15W-40			
Optional		ATS			
		Remote control			
		Digital smart panel			
		Wheel and handle			
Overall dimension(L*W*H)	mm	660*460*540		740*505*630	
Net weight	kg	72		113	

Technical Data



MODEL		SDG7500E	SDG8500E	SDG9500E	
Rated frequency	Hz	50	50 60	50 60	
Rated voltage	V	220, 230, 240, 110/220, 127/220, 115/230, 120/240, 220/380, 230/400, 240/415			
Rated power	Kw	5	5.5 6	6.5 7	
Max. power	Kw	5.5	6 6.5	7 7.1 7.7	
Phase number		Single phase / three phase			
Excitation mode		Self-excitation and constant voltage (with AVR)			
Power factor	cosΦ	1.0(0.8)	1.0(0.8)	1.0(0.8)	
Insulation grade		F	F	F	
Fuel capacity	L	12.5	12.5	12.5	
Engine model		SD188FA(E)	SD192F(E)	SD195FE	
Engine type		Single cylinder, 4-stroke, air cooled, vertical			
Starting system		Manual / Electric			
Bore x stroke	mm	88*75	92*75	95*75	
Displacement	L	0.456	0.499	0.532	
Compression ratio		20:1	20:1	20:1	
Rated rotation speed	rpm	3000/3600	3000/3600	3000/3600	
Rated power	kW	6.6/6.9	7.6/8.6	8/9.2	
Lube oil capacity	L	1.65	1.65	1.65	
Fuel consumption	g/kW.h	275/280	275/280	275/280	
Fuel type		DIESEL: 0# (summer) -10# (winter) -35# (chillness)			
Lube oil type		About CD grade or SAE 10W-30, 15W-40			
Optional		ATS			
		Remote control			
		Digital smart panel			
		Wheel and handle			
Overall dimension(L*W*H)	mm	740*505*630	740*505*630	740*505*630	
Net weight	kg	114	124	130	

Technical Data



MODEL		SDG10000E	SDG11000E	
Rated frequency	Hz	50	50 60	
Rated voltage	V	220, 230, 240, 110/220, 127/220, 115/230, 120/240, 220/380, 230/400, 240/415		
Rated power	Kw	8	8.5 9	
Max. power	Kw	8.5	9.2 9.8 10.3	
Phase number		Single phase / three phase		
Excitation mode		Self-excitation and constant voltage (with AVR)		
Power factor	cosΦ	1.0(0.8)	1.0(0.8)	
Insulation grade		F	F	
Fuel capacity	L	12.5	12.5	
Engine model		SD1100FE	SD1105FE	
Engine type		Single cylinder, 4-stroke, air cooled, vertical		
Starting system		Electric start		
Bore x stroke	mm	100*85	105*85	
Displacement	L	0.668	0.736	
Compression ratio		20:1	20:1	
Rated rotation speed	rpm	3000/3600	3000/3600	
Rated power	kW	9.5/10.9	12.0/12.5	
Lube oil capacity	L	2.1	2.1	
Fuel consumption	g/kW.h	275/280	275/280	
Fuel type		DIESEL: 0# (summer) -10# (winter) -35# (chillness)		
Lube oil type		About CD grade or SAE 10W-30, 15W-40		
Optional		ATS		
		Remote control		
		Digital smart panel		
		Wheel and handle		
Overall dimension(L*W*H)	mm	1060*580*780	1060*580*780	
Net weight	kg	160	170	

Technical Data



MODEL		SDG12000XE	SDG12000E
Rated frequency	Hz	50 60	50 60
Rated voltage	V	220, 230, 240, 110/220, 127/220, 115/230, 120/240, 220/380, 230/400, 240/415	
Rated power	Kw	9.5	10.5 11
Max. power	Kw	10.5	11.5 12
Phase number		Single phase / three phase	
Excitation mode		Self-excitation and constant voltage (with AVR)	
Power factor	cosΦ	1.0(0.8)	1.0(0.8)
Insulation grade		F	F
Fuel capacity	L	25	25
Engine model		SD2V80	SD2V88
Engine type		2-cylinder, 4-stroke, water- cooled, VType	2-cylinder,4-stroke,air- cooled, VType
Starting system		Electric start	
Bore x stroke	mm	2-80*79	2-88*75
Displacement	L	0.794	0.875
Compression ratio		20:1	20:1
Rated rotation speed	rpm	3000/3600	3000/3600
Rated power	kW	12.5/14	12.5/14
Lube oil capacity	L	2.6	3.2
Fuel consumption	g/kW.h	275/280	275/280
Fuel type		DIESEL: 0# (summer) -10# (winter) -35# (chillness)	
Lube oil type		About CD grade or SAE 10W-30、15W-40	
Optional		ATS	
		Remote control	
		Digital smart panel	
		Wheel and handle	
Overall dimension(L*W*H)	mm	1030*650*600	930*620*695
Net weight	kg	210	185



MODEL		SDG15000E	SDG18000E
Rated frequency	Hz	50 60	50 60
Rated voltage	V	220, 230, 240, 110/220, 127/220, 115/230, 120/240, 220/380, 230/400, 240/415	
Rated power	Kw	12	13 14 15
Max. power	Kw	13	14 15 16
Phase number		Single phase / three phase	
Excitation mode		Self-excitation and constant voltage (with AVR)	
Power factor	cosΦ	1.0(0.8)	1.0(0.8)
Insulation grade		F	F
Fuel capacity	L	25	25
Engine model		SD2V92	SD2V95
Engine type		2-cylinder, 4-stroke, air- cooled, VType	
Starting system		Electric start	
Bore x stroke	mm	92*75	95*88
Displacement	L	0.997	1.247
Compression ratio		20:1	20:1
Rated rotation speed	rpm	3000/3600	3000/3600
Rated power	kW	14/15.5	19/21
Lube oil capacity	L	3.8	4
Fuel consumption	g/kW.h	275/280	275/280
Fuel type		DIESEL: 0# (summer) -10# (winter) -35# (chillness)	
Lube oil type		About CD grade or SAE 10W-30、15W-40	
Optional		ATS	
		Remote control	
		Digital smart panel	
		Wheel and handle	
Overall dimension(L*W*H)	mm	1200*720*880	1250*720*880
Net weight	kg	260	270

SILENT DIESEL GENERATOR

Two-stage muffler device

Scientific damping effect, patent two-stage muffler silencer, advanced air-flue design and muffler device.

High conversion efficiency

100% copper alternator, class F insulation, high conversion efficiency, smart AVR controller ensures stable voltage and less voltage waveform distortion.

Strong power

With SR Power four-stroke diesel engine, new tip-clearance fuel pump and bottom. Inertia injection technology, makes burning full and power strong.

Optional items

Remoter: control anytime anywhere freely.

ATS: automatic transfer from city power and gen-set power.

Intelligent digital control panel: with overload, over voltage, over current and low oil pressure protection function.



Technical Data



MODEL		SDG6500SE		SDG7500SE	
Rated frequency	Hz	50	60	50	60
Rated voltage	V	220, 230, 240, 110/220, 127/220, 115/230, 120/240, 220/380, 230/400, 240/415		220, 230, 240, 110/220, 127/220, 115/230, 120/240, 220/380, 230/400, 240/415	
Rated power	Kw	4.5	5	5	5.5
Max. power	Kw	5	5.5	5.5	6
Phase number		Single phase / three phase		Single phase / three phase	
Excitation mode		Self-excitation and constant voltage (with AVR)		Self-excitation and constant voltage (with AVR)	
Power factor	cosΦ	1.0(0.8)		1.0(0.8)	
Insulation grade		F		F	
Fuel capacity	L	12.5		12.5	
Noise Level@7m	dB(A)	72		72	
Engine model		SD186FAE		SD188FAE	
Engine type		Single cylinder, 4-stroke, air cooled, vertical		Single cylinder, 4-stroke, air cooled, vertical	
Starting system		Electric start		Electric start	
Bore x stroke	mm	86*72		88*75	
Displacement	L	0.418		0.456	
Compression ratio		19.5:1		19.5:1	
Rated rotation speed	rpm	3000/3600		3000/3600	
Rated power	kW	5.8/6.6		6.6/6.9	
Lube oil capacity	L	1.65		1.65	
Fuel type		DIESEL: 0# (summer) -10# (winter) -35# (chillness)		DIESEL: 0# (summer) -10# (winter) -35# (chillness)	
Lube oil type		About CD grade or SAE 10W-30, 15W-40		About CD grade or SAE 10W-30, 15W-40	
Optional		ATS		ATS	
		Remote control		Remote control	
		Digital smart panel		Digital smart panel	
Overall dimension(L*W*H)	mm	910*530*740		910*530*740	
Net weight	kg	149		151	

Technical Data



MODEL		SDG8500SE		SDG9500SE	
Rated frequency	Hz	50	60	50	60
Rated voltage	V	220, 230, 240, 110/220, 127/220, 115/230, 120/240, 220/380, 230/400, 240/415		220, 230, 240, 110/220, 127/220, 115/230, 120/240, 220/380, 230/400, 240/415	
Rated power	Kw	6	6.5	6.5	7
Max. power	Kw	6.5	7.1	7	7.7
Phase number		Single phase / three phase		Single phase / three phase	
Excitation mode		Self-excitation and constant voltage (with AVR)		Self-excitation and constant voltage (with AVR)	
Power factor	cosΦ	1.0(0.8)		1.0(0.8)	
Insulation grade		F		F	
Fuel capacity	L	12.5		12.5	
Noise Level@7m	dB(A)	72		72	
Engine model		SD192FE		SD195FE	
Engine type		Single cylinder, 4-stroke, air cooled, vertical		Single cylinder, 4-stroke, air cooled, vertical	
Starting system		Electric start		Electric start	
Bore x stroke	mm	92*75		95*75	
Displacement	L	0.499		0.532	
Compression ratio		19.5:1		19.5:1	
Rated rotation speed	rpm	3000/3600		3000/3600	
Rated power	kW	7.6/8.6		8/9.2	
Lube oil capacity	L	1.65		1.65	
Fuel type		DIESEL: 0# (summer) -10# (winter) -35# (chillness)		DIESEL: 0# (summer) -10# (winter) -35# (chillness)	
Lube oil type		About CD grade or SAE 10W-30、15W-40		About CD grade or SAE 10W-30、15W-40	
Optional		ATS		ATS	
		Remote control		Remote control	
		Digital smart panel		Digital smart panel	
Overall dimension(L*W*H)	mm	910*530*740		910*530*840	
Net weight	kg	171		175	



MODEL		SDG10000SE		SDG11000SE	
Rated frequency	Hz	50	60	50	60
Rated voltage	V	220, 230, 240, 110/220, 127/220, 115/230, 120/240, 220/380, 230/400, 240/415		220, 230, 240, 110/220, 127/220, 115/230, 120/240, 220/380, 230/400, 240/415	
Rated power	Kw	8	8.5	9	9.5
Max. power	Kw	8.5	9.2	9.8	10.3
Phase number		Single phase / three phase		Single phase / three phase	
Excitation mode		Self-excitation and constant voltage (with AVR)		Self-excitation and constant voltage (with AVR)	
Power factor	cosΦ	1.0(0.8)		1.0(0.8)	
Insulation grade		F		F	
Fuel capacity	L	12.5		12.5	
Noise Level@7m	dB(A)	72		72	
Engine model		SD1100FE		SD1105FE	
Engine type		Single cylinder, 4-stroke, air cooled, vertical		Single cylinder, 4-stroke, air cooled, vertical	
Starting system		Electric start		Electric start	
Bore x stroke	mm	100*85		105*85	
Displacement	L	0.668		0.736	
Compression ratio		19.5:1		19.5:1	
Rated rotation speed	rpm	3000/3600		3000/3600	
Rated power	kW	9.5/10.9		12.0/12.5	
Lube oil capacity	L	2.1		2.1	
Fuel type		DIESEL: 0# (summer) -10# (winter) -35# (chillness)		DIESEL: 0# (summer) -10# (winter) -35# (chillness)	
Lube oil type		About CD grade or SAE 10W-30、15W-40		About CD grade or SAE 10W-30、15W-40	
Optional		ATS		ATS	
		Remote control		Remote control	
		Digital smart panel		Digital smart panel	
Overall dimension(L*W*H)	mm	1060*620*780		1060*620*780	
Net weight	kg	210		220	

Technical Data



MODEL		SDG12000XSE		SDG12000SE	
Rated frequency	Hz	50	60	50	60
Rated voltage	V	220, 230, 240, 110/220, 127/220, 115/230, 120/240, 220/380, 230/400, 240/415		220, 230, 240, 110/220, 127/220, 115/230, 120/240, 220/380, 230/400, 240/415	
Rated power	Kw	9.5	10.5	10	11
Max. power	Kw	10.5	11.5	11	12
Phase number		Single phase / three phase		Single phase / three phase	
Excitation mode		Self-excitation and constant voltage (with AVR)		Self-excitation and constant voltage (with AVR)	
Power factor	cosΦ	1.0(0.8)		1.0(0.8)	
Insulation grade		F		F	
Fuel capacity	L	25		25	
Noise Level@7m	dB(A)	72		72	
Engine model		SD2V80		SD2V88	
Engine type		2-cylinder, 4-stroke, water-cooled, VType		2-cylinder, 4-stroke, air-cooled, VType	
Starting system		Electric start		Electric start	
Bore x stroke	mm	2-80*79		2-88*75	
Displacement	L	0.794		0.875	
Compression ratio		23.0:1		19.0:1	
Rated rotation speed	rpm	3000/3600		3000/3600	
Rated power	kW	12.5/14		12.5/14	
Lube oil capacity	L	2.6		3.2	
Fuel type		DIESEL: 0# (summer) -10# (winter) -35# (chillness)		DIESEL: 0# (summer) -10# (winter) -35# (chillness)	
Lube oil type		About CD grade or SAE 10W-30, 15W-40		About CD grade or SAE 10W-30, 15W-40	
Optional		ATS		ATS	
		Remote control		Remote control	
		Digital smart panel		Digital smart panel	
Overall dimension(L*W*H)	mm	1110*700*780		1150*720*770	
Net weight	kg	258		240	



MODEL		SDG15000SE		SDG18000SE	
Rated frequency	Hz	50	60	50	60
Rated voltage	V	220, 230, 240, 110/220, 127/220, 115/230, 120/240, 220/380, 230/400, 240/415		220, 230, 240, 110/220, 127/220, 115/230, 120/240, 220/380, 230/400, 240/415	
Rated power	Kw	12	13	14	15
Max. power	Kw	13	14	15	16
Phase number		Single phase / three phase		Single phase / three phase	
Excitation mode		Self-excitation and constant voltage (with AVR)		Self-excitation and constant voltage (with AVR)	
Power factor	cosΦ	1.0(0.8)		1.0(0.8)	
Insulation grade		F		F	
Fuel capacity	L	25		25	
Noise Level@7m	dB(A)	72		72	
Engine model		SD2V92		SD2V95	
Engine type		2-cylinder, 4-stroke, air-cooled, VType		2-cylinder, 4-stroke, air-cooled, VType	
Starting system		Electric start		Electric start	
Bore x stroke	mm	2-92*75		2-95*88	
Displacement	L	0.997		1.247	
Compression ratio		20.0:1		20.0:1	
Rated rotation speed	rpm	3000/3600		3000/3600	
Rated power	kW	14/15.5		19/21	
Lube oil capacity	L	3.8		4	
Fuel type		DIESEL: 0# (summer) -10# (winter) -35# (chillness)		DIESEL: 0# (summer) -10# (winter) -35# (chillness)	
Lube oil type		About CD grade or SAE 10W-30, 15W-40		About CD grade or SAE 10W-30, 15W-40	
Optional		ATS		ATS	
		Remote control		Remote control	
		Digital smart panel		Digital smart panel	
Overall dimension(L*W*H)	mm	1200*720*880		1250*720*880	
Net weight	kg	260		270	

SUPER SILENT DIESEL GENERATOR

Output the power you need

Strong, flexible, general, reliable and durable. You can find the most suitable generator here.

Quieter operation, bigger power

High-efficient combustion system ensures sufficient combustion; muffler reduces exhaust noise greatly; engine noise is isolated in double structure and absorbed by special lining. Wide application and wide range capacity can meet all requirements of clients.

Control panel

All operation functions of the generator set are on the control panel, with a digital readable display showing operation time, output voltage and current. Breakers can protect generator set from overload damage.

Lifting hook and transport wheels

Integrated to enable simple and safe loading and transportation.



Technical Data



MODEL		SDG6500SSE		SDG8500SSE	
		50	60	50	60
Rated frequency	Hz	50	60	50	60
Rated voltage	V	220, 230, 240, 110/220, 127/220, 115/230, 120/240, 220/380, 230/400, 240/415		220, 230, 240, 110/220, 127/220, 115/230, 120/240, 220/380, 230/400, 240/415	
Rated power	Kw	4.5	5	6	6.5
Max. power	Kw	5	5.5	6.5	7.1
Phase number		Single phase / three phase		Single phase / three phase	
Excitation mode		Self-excitation and constant voltage (with AVR)		Self-excitation and constant voltage (with AVR)	
Power factor	cosΦ	1.0(0.8)		1.0(0.8)	
Insulation grade		F		F	
Fuel capacity	L	12.5		12.5	
Noise Level@7m	dB(A)	65	66	65	66
Engine model		SD186FAE		SD192FE	
Engine type		Single cylinder, 4-stroke, air cooled, vertical		Single cylinder, 4-stroke, air cooled, vertical	
Starting system		Electric start		Electric start	
Bore x stroke	mm	86*72		92*75	
Displacement	L	0.418		0.499	
Compression ratio		20:1		20:1	
Rated rotation speed	rpm	3000/3600		3000/3600	
Rated power	kW	5.8/6.6		7.6/8.6	
Lube oil capacity	L	1.65		1.65	
Fuel type		DIESEL: 0 # (summer) -10 # (winter) -35 # (chillness)		DIESEL: 0 # (summer) -10 # (winter) -35 # (chillness)	
Lube oil type		About CD grade or SAE 10W-30, 15W-40		About CD grade or SAE 10W-30, 15W-40	
Optional		ATS		ATS	
		Remote control		Remote control	
		Digital smart panel		Digital smart panel	
Overall dimension(L*W*H)	mm	995*645*890		995*645*890	
Net weight	kg	155		175	



Power By Cummins

CUMMINS is a globally recognized brand in diesel engines. They are used in diverse applications like trucks, off – highway equipment, power generation, and marine vessels. The engines have a sturdy design with a high – strength cast iron block and precision cylinder liners. Their advanced fuel injection systems ensure efficient combustion. Performance – wise, they offer a wide power and torque range, high fuel efficiency, and great reliability and durability even in harsh conditions. Cummins focuses on emissions control via technologies like EGR, DPF, and SCR to meet environmental regulations. With a vast global service network and a wide range of applications, Cummins diesel engines are a popular choice worldwide.

Power By Cummins

50HZ

Model	Standby Power (kva)	Standby Power (kw)	Prime Power (kva)	Prime Power (kw)	Engine Name
SDG23CM	23	19	21	17	4B3.9-G11
SDG30CM	30	24	28	22	4B3.9-G1
SDG30C	30	24	28	22	4B3.9-G2
SDG34C	34	27	31	25	4B3.9-G12
SDG44CM	44	35	40	32	4BT3.9-G1
SDG44C	44	35	40	32	4BT3.9-G2
SDG62C	62	50	56	45	4BTA3.9-G2
SDG70C	70	56	65	52	4BTA3.9-G2
SDG90C	90	72	80	64	4BTA3.9-G11
SDG103CM	103	82	94	75	6BT5.9-G1
SDG103C	103	82	94	75	6BT5.9-G2
SDG116C	116	92	105	84	6BT5.9-G2
SDG125C	125	100	115	92	6BTA5.9-G2
SDG145C	145	116	135	108	6BTAA5.9-G2
SDG165C	165	132	150	120	6BTAA5.9-G12
SDG199CM	199	160	181	145	6CTA8.3-G1
SDG199C	199	160	181	145	6CTA8.3-G2
SDG215C	215	172	200	160	6CTAA8.3-G2
SDG264C	264	211	250	200	6LTAA8.9-G2
SDG275C	275	220	250	200	NTA855-G1
SDG300C	300	240	270	216	6LTAA9.5-G3
SDG313C	313	250	275	220	NTA855-G1A
SDG350C	350	280	310	248	NTA855-G1B
SDG350C	350	280	320	256	6LTAA9.5-G1
SDG375C	375	300	344	275	NTA855-G2A
SDG388C	388	310	350	280	NTA855-G4
SDG413C	413	330	375	300	NTAA855-G7
SDG425C	425	340	388	310	6ZTAA13-G3
SDG469C	469	375	438	350	QSZ13-G2
SDG475C	475	380	438	350	6ZTAA13-G2
SDG500C	500	400	450	360	QSZ13-G5
SDG500C	500	400	450	360	KTA19-G3
SDG523C	500	400	475	380	QSZ13-G3
SDG550C	550	440	500	400	KTA19-G3A
SDG628C	628	502	525	420	KTAA19-G5
SDG650C	650	520	575	460	KTAA19-G6
SDG700C	700	560	625	500	KT38-G
SDG800C	800	640	725	580	KTA38-GA
SDG825C	825	660	750	600	KTA38-G2
SDG888C	888	710	800	640	KTA38-G2B
SDG1000C	1000	800	910	728	KTA38-G2A
SDG1100C	1100	880	1000	800	KTA38-G5
SDG1375C	1375	1100	1250	1000	KTA50-G3
SDG1650C	1650	1320	1375	1100	KTA50-G8
SDG1650C	1650	1320	1475	1180	KTA50-GS8
SDG1875C	1875	1500	1675	1340	KTA50-G15X
SDG2063C	2063	1650	2000	1600	KTA50-G16B

Power By Cummins

60HZ

Model	Standby Power (kva)	Standby Power (kw)	Prime Power (kva)	Prime Power (kw)	Engine Name
SDG28CM	28	22	25	20	4B3.9-G11
SDG34C	34	27	30	24	4B3.9-G2
SDG38C	38	30	35	28	4B3.9-G12
SDG50C	50	40	45	36	4BT3.9-G2
SDG70C	70	56	64	51	4BTA3.9-G2
SDG85C	85	68	75	60	4BTA3.9-G2
SDG100C	100	80	90	72	4BTA3.9-G11
SDG116C	116	92	105	84	6BT5.9-G2
SDG138C	138	110	125	100	6BT5.9-G2
SDG144C	144	116	131	105	6BTA5.9-G2
SDG156C	156	125	145	116	6BTAA5.9-G2
SDG175C	175	140	160	128	6BTAA5.9-G12
SDG209C	209	167	190	152	6CTA8.3-G2
SDG230C	230	184	210	168	6CTAA8.3-G2
SDG285C	285	228	260	208	6LTAA8.9-G2
SDG310C	310	248	280	224	6LTAA8.9-G3
SDG315C	315	252	285	228	6LTAA9.5-G3
SDG344C	344	275	313	250	NTA855-G1
SDG350C	350	280	320	256	6LTAA9.5-G1
SDG375C	375	300	344	275	NTA855-G1B
SDG425C	425	340	388	310	6ZTAA13-G3
SDG438C	438	350	394	315	NTA855-G3
SDG469C	469	375	438	350	QSZ13-G2
SDG475C	475	380	438	350	6ZTAA13-G2
SDG500C	500	400	438	350	KTA19-G2
SDG500C	500	400	475	380	QSZ13-G5
SDG563C	563	450	513	410	KTA19-G3
SDG625C	625	500	563	450	KTA19-G3A
SDG850C	850	680	775	620	KT38-G
SDG1000C	1000	800	906	725	KTA38-G2
SDG1100C	1100	880	1000	800	KTA38-G2A
SDG1250C	1250	1000	1125	900	KTA38-G4
SDG1575C	1575	1260	1375	1100	KTA50-G3
SDG1875C	1875	1500	1575	1260	KTA50-G9

Power By Perkins

PERKINS is a well-known brand in the diesel engine industry, recognized for its high-quality, reliable engines that are used in a variety of applications, including agriculture, construction, and power generation. Founded in 1932, Perkins has built a strong reputation for innovation and performance.

Durability: Perkins engines are designed to withstand harsh operating conditions, making them suitable for demanding environments.

Efficiency: Their engines often focus on fuel efficiency and low emissions, aligning with modern environmental standards.

Versatility: Perkins offers engines in various power ranges, allowing them to be used in multiple applications, from small machinery to large industrial equipment.

Support and Service: The brand provides extensive support and service options, ensuring that customers have access to parts and technical assistance when needed.

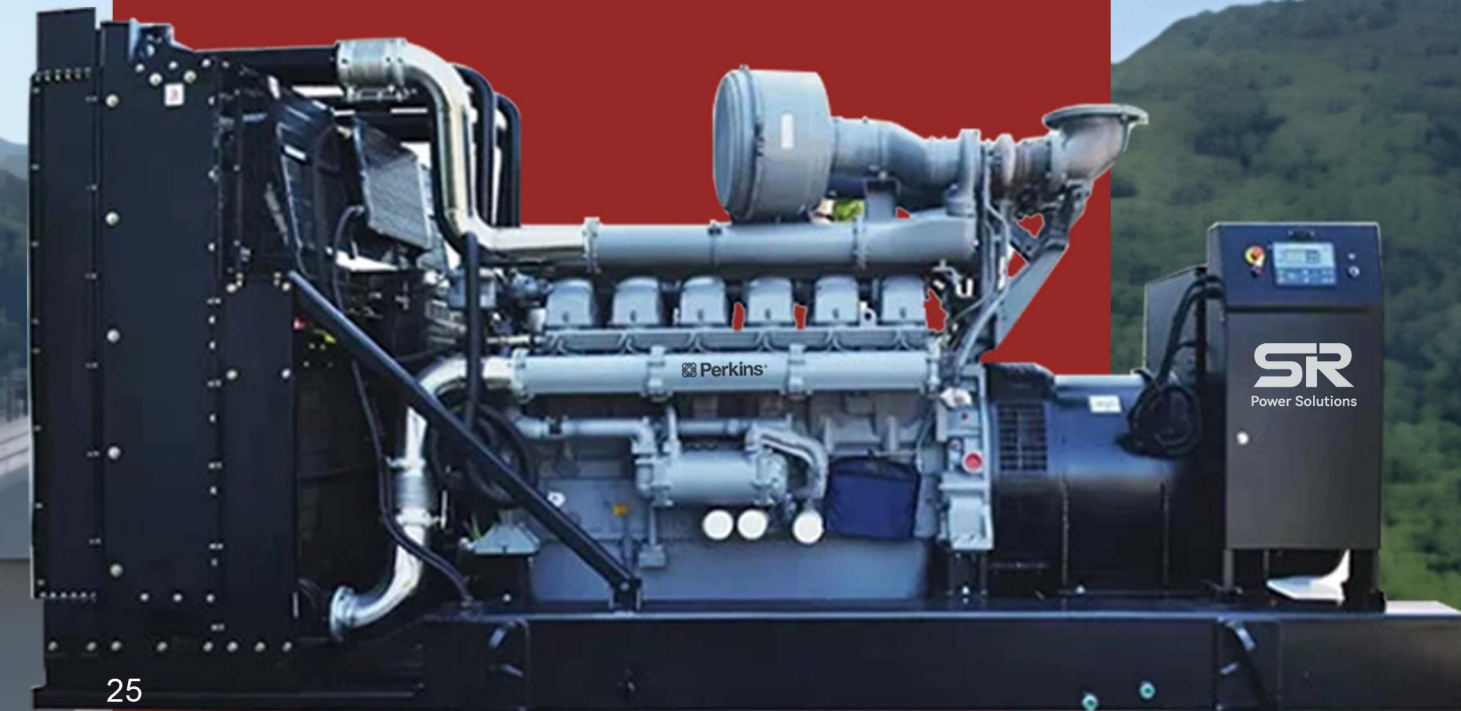
Global Presence: With manufacturing facilities and service networks around the world, Perkins ensures that its engines are readily available and supported in many markets.

Perkins diesel engines are a popular choice for those seeking reliable power solutions across different industries.

Power By Perkins

50HZ

Model	Standby Power (kva)	Standby Power (kw)	Prime Power (kva)	Prime Power (kw)	Engine Model
SDG10PM	10	8	9	7	403D-11G commodity
SDG14PM	14	11	12	10	403D-15G L
SDG17PM	17	13	14	12	403A-15G2
SDG22PM	22	18	15	16	404D-22G L
SDG30P	30	24	17	22	404D-22TG
SDG33PM	33	26	43	24	1103A-33G
SDG34P	34	28	46	25	1103D-33G2
SDG50PM	50	40	44	36	1103A-33TG1
SDG66P	66	53	21	48	1104D-44TG2 EU
SDG66PM	66	53	45	48	1103A-33TG2
SDG72PM	72	57	22	52	1104A-44TG1
SDG88PM	88	70	23	64	1104A-44TG2
SDG88P	88	70	25	64	1104D-E44TAG1 EU
SDG110P	110	88	24	80	1104C-44TAG2
SDG110P	110	88	26	80	1104D-E44TAG2 EU
SDG132P	132	106	47	96	1204J-E44TTAG2
SDG149PM	149	119	29	108	1106A-70TG1
SDG157P	157	125	36	114	1106D-E70TAG2 EU
SDG165PM	165	132	30	120	1106A-70TAG2
SDG172P	172	138	37	125	1106D-E70TAG3 EU
SDG198PM	198	158	31	144	1106A-70TAG3
SDG198P	198	158	38	144	1106D-E70TAG4 EU
SDG219P	219	175	50	159	1206J-E70TTAG3
SDG219P	219	175	51	159	1206J-E70TTAG4
SDG220P	220	176	32	160	1106A-70TAG4
SDG220P	220	176	52	160	1206D-E70TTAG1
SDG253P	253	202	53	184	1206D-E70TTAG2
SDG254P	254	204	56	185	1506A-E88TAG2 L
SDG275P	275	220	54	200	1206D-E70TTAG3
SDG275P	275	220	55	200	1206A-E70TTAG3
SDG283P	283	227	57	206	1506A-E88TAG3 L
SDG338P	338	271	58	246	1506A-E88TAG5 L
SDG385P	385	308	59	280	2206C-E13TAG2 L
SDG385P	385	308	62	280	2206A-E13TAG5
SDG385P	385	308	65	280	2206A-E13TAG6
SDG440P	440	352	60	320	2206C-E13TAG3 L
SDG440P	440	352	63	320	2206D-E13TAG3 L
SDG451P	451	361	66	328	2406J-E13TAG3
SDG501P	501	400	67	364	2506C-E15TAG1 L
SDG550P	550	440	68	400	2506C-E15TAG2 L
SDG550P	550	440	70	400	2506D-E15TAG2 L
SDG611P	611	488	74	444	2806J-E18TAG1
SDG650P	650	520	75	473	2806C-E18TAG1A L
SDG715P	715	572	76	520	2806A-E18TAG2 L
SDG777P	777	622	80	565	2806A-E18TTAG4
SDG847P	847	678	81	616	2806A-E18TTAG5



Power By Perkins

60HZ

Model	Standby Power (kva)	Standby Power (kw)	Prime Power (kva)	Prime Power (kw)	Engine Model
SDG12PM	12	10	11	9	403D-11G commodity
SDG12PM	12	10	11	9	403D-11G ESE
SDG12PM	12	10	11	9	403F-11G
SDG17PM	17	14	16	13	403D-15G L
SDG17PM	17	14	16	13	403D-15G ESE
SDG19PM	19	15	18	14	403A-15G2
SDG26PM	26	21	24	19	404D-22G ESE
SDG36P	36	29	33	26	404D-22TG
SDG36P	36	29	33	26	404D-22TG ESE
SDG38PM	38	31	35	28	1103A-33G
SDG40P	40	32	36	29	1103D-33G2
SDG58PM	58	47	53	43	1103A-33TG1
SDG71PM	71	57	/	/	1104D-44TG1 ESE
SDG72P	72	57	65	52	1104D-44TG2 EU
SDG75P	75	60	68	55	1104D-E44TG1 ESE
SDG75PM	75	60	68	55	1103A-33TG2
SDG84PM	84	67	76	61	1104A-44TG1
SDG100P	100	80	91	73	1104D-E44TAG1 EU
SDG100P	100	80	91	73	1104D-E44TAG1 ESE
SDG100PM	100	80	91	73	1104A-44TG2
SDG125P	125	100	114	91	1104D-E44TAG2 EU
SDG125P	125	100	114	91	1104D-E44TAG2 ESE
SDG125P	125	100	114	91	1204J-E44TTAG2
SDG126P	126	101	114	92	1104C-44TAG2
SDG167PM	167	134	152	122	1106A-70TG1
SDG179P	179	143	162	130	1106D-E70TAG2 EU
SDG179P	179	143	162	130	1106D-E70TAG2 ESE
SDG186PM	186	149	169	135	1106A-70TAG2
SDG186P	186	149	169	135	1206F-E70TTAG3
SDG186P	186	149	169	135	1206J-E70TTAG3
SDG191P	191	153	174	139	1106D-E70TAG3 EU
SDG191P	191	153	174	139	1106D-E70TAG3 ESE
SDG217PM	217	173	197	158	1106A-70TAG3

Power By Perkins

60HZ

Model	Standby Power (kva)	Standby Power (kw)	Prime Power (kva)	Prime Power (kw)	Engine Model
SDG220P	220	176	200	160	1106D-E70TAG4 EU
SDG220P	220	176	200	160	1106D-E70TAG4 ESE
SDG248P	248	198	225	180	1206F-E70TTAG4
SDG248P	248	198	225	180	1206J-E70TTAG4
SDG248P	248	198	225	180	1206D-E70TTAG1
SDG248P	248	198	225	180	1206D-E70TTAG2
SDG248P	248	198	225	180	1206D-E70TTAG3
SDG248P	248	198	225	180	1206A-E70TTAG3
SDG250P	250	200	227	182	1106D-E70TAG5 ESE
SDG272P	272	218	248	198	1506A-E88TAG2 L
SDG319P	319	255	290	232	1506A-E88TAG3 L
SDG388P	388	310	352	282	1506A-E88TAG5 L
SDG440P	440	352	400	320	2206C-E13TAG2 L
SDG440P	440	352	400	320	2206C-E13TAG3 L
SDG440P	440	352	400	320	2206D-E13TAG2
SDG440P	440	352	400	320	2206A-E13TAG5
SDG470P	470	376	428	342	2406J-E13TAG3
SDG481P	481	385	438	350	2206D-E13TAG3
SDG481P	481	385	438	350	2206A-E13TAG6
SDG550P	550	440	500	400	2506C-E15TAG1 L
SDG550P	550	440	500	400	2506C-E15TAG2 L
SDG550P	550	440	500	400	2506D-E15TAG1
SDG612P	612	490	569	445	2806J-E18TAG1
SDG626P	626	501	569	455	2806F-E18TAG1
SDG644P	644	515	585	468	2506C-E15TAG3
SDG687P	687	550	/	/	2506C-E15TAG4
SDG688P	688	550	625	500	2806C-E18TAG1A L
SDG688P	688	550	625	500	2806A-E18TAG2 L
SDG750P	750	600	/	/	2806C-E18TAG3
SDG883P	883	706	802	642	2806A-E18TTAG4
SDG883P	883	706	802	642	2806A-E18TTAG5
SDG894P	894	715	813	650	2806C-E18TTAG6
SDG935P	935	748	850	680	2806C-E18TTAG7

Power By Volvo

Volvo was founded in 1927. For a long time, its shining brand has been closely linked to its three core values – quality, safety, and environmental protection. Volvo PENTA is a subsidiary of the group, specializing in the production of power generation, special vehicles, and marine engines. It has technological advantages in six cylinder engines and electronic ignition. It has the characteristics of small size, low fuel consumption, high precision, and long service life. High quality products have always won unanimous praise from users around the world.



Power By Volvo

50HZ

Model	Standby Power (kva)	Standby Power (kw)	Prime Power (kva)	Prime Power (kw)	Engine Model
SDG94V	94	75	85	68	TAD530GE
SDG110V	110	88	100	80	TAD531GE
SDG138V	138	110	125	100	TAD532GE
SDG165V	165	132	150	120	TAD731GE
SDG206V	198	158	180	144	TAD732GE
SDG220V	220	176	200	160	TAD733GE
SDG275V	275	220	250	200	TAD734GE
SDG344V	344	275	313	250	TAD1341GE
SDG385V	385	308	350	280	TAD1342GE
SDG413V	413	330	375	300	TAD1343GE
SDG440V	440	352	400	320	TAD1344GE
SDG481V	495	396	450	360	TAD1345GE
SDG550V	550	440	500	400	TAD1641GE
SDG619V	619	495	563	450	TAD1642GE
SDG688V	688	550	625	500	TWD1644GE
SDG756V	756	605	688	550	TWD1645GE

60HZ

Model	Standby Power (kva)	Standby Power (kw)	Prime Power (kva)	Prime Power (kw)	Engine Model
SDG95V	95	76	86	69	TAD530GE
SDG110V	110	88	100	80	TAD531GE
SDG143V	143	114	130	104	TAD532GE
SDG176V	176	141	160	128	TAD731GE
SDG220V	220	176	200	160	TAD732GE
SDG242V	242	194	220	176	TAD733GE
SDG286V	286	229	260	208	TAD841GE
SDG330V	330	264	300	240	TAD842GE
SDG352V	352	282	320	256	TAD842GE
SDG374V	374	299	340	272	TAD1341GE
SDG440V	440	352	400	320	TAD1342GE
SDG451V	451	361	410	328	TAD1343GE
SDG495V	495	396	450	360	TAD1344GE
SDG605V	605	484	550	440	TAD1641GE
SDG688V	688	550	625	500	TAD1642GE
SDG754V	754	603	685	548	TWD1644GE
SDG798V	798	638	725	580	TWD1645GE

Power By Weichai



WEICHAI is a leading Chinese manufacturer of diesel engines and related products, known for its innovation and high-quality engineering. Founded in 1946, Weichai has established itself as a significant player in the global engine market.

Diverse Product Range: Weichai produces a wide array of diesel engines, catering to various applications such as trucks, buses, construction machinery, marine vessels, and power generation. Their engines typically range from small to large horsepower.

Advanced Technology: The brand invests heavily in research and development, incorporating advanced technologies to enhance engine performance, fuel efficiency, and emissions control. This focus on innovation helps meet modern environmental regulations.

Reliability and Durability: Weichai engines are designed for robustness and long service life, making them suitable for heavy-duty applications. Their reputation for reliability is a key selling point.

Global Presence: Weichai has expanded its operations internationally, establishing joint ventures and partnerships in various countries, which helps to broaden its market reach and enhance brand recognition.

Comprehensive Support: The company provides extensive after-sales service and support, ensuring that customers have access to parts and technical assistance, which is crucial for maintaining engine performance.

WEICHAI diesel engines are recognized for their performance, efficiency, and reliability, making them a popular choice in various industries worldwide.

Power By Weichai

50HZ

Model	Standby Power (kva)	Standby Power (kw)	Prime Power (kva)	Prime Power (kw)	Engine Model
SDG25W	25	20	23	18	WP2.3D25E200
SDG35W	35	28	33	26	WP2.3D33E200
SDG41W	41	33	38	30	WP2.3D40E200
SDG50W	50	40	45	36	WP2.3D48E200
SDG69W	69	55	63	50	WP4.1D66E200
SDG88W	88	70	80	64	WP4.1D80E200
SDG110W	110	88	100	80	WP4.1D100E200
SDG150W	150	120	125	100	WP6D132E200
SDG165W	165	132	150	120	WP6D152E200
SDG188W	188	150	170	136	WP6D167E200^
SDG220W	220	176	200	160	WP10D200E200
SDG250W	250	200	230	184	WP10D238E200
SDG275W	275	220	250	200	WP10D264E200
SDG350W	350	280	313	250	WP10D320E200
SDG400W	400	320	375	300	WP13D385E200
SDG438W	438	350	400	320	WP13D405E200
SDG500W	500	400	438	350	WP13D440E310
SDG550W	550	440	500	400	WP13D490E310
SDG650W	650	520	575	460	6M33D572E200
SDG725W	725	580	650	520	6M33D633E200
SDG750W	750	600	675	540	6M33D670E200
SDG825W	825	660	750	600	6M33D725E310
SDG875W	875	700	800	640	12M26D792E200
SDG1000W	1000	800	900	720	12M26D902E200
SDG1100W	1100	880	1000	800	12M26D968E200
SDG1250W	1250	1000	1125	900	12M33D1108E200
SDG1375W	1375	1100	1250	1000	12M33D1210E200
SDG1500W	1500	1200	1375	1100	12M33D1320E200
SDG1650W	1650	1320	1500	1200	12M33D1500E310
SDG1750W	1750	1400	1563	1250	16M33D1530E310
SDG1800W	1800	1440	1625	1300	16M33D1580E310
SDG1900W	1900	1520	1750	1400	16M33D1680E310
SDG2063W	2063	1650	1875	1500	16M33D1800E310
SDG2250W	2250	1800	2000	1600	16M33D1980E310
SDG2250W	2250	1800	2000	1600	20M33D2020E310
SDG2500W	2500	2000	2250	1800	20M33D2210E310
SDG2500W	2500	2000	2250	1800	12M55D2210E310
SDG3750W	2750	2200	2500	2000	12M55D2450E310
SDG3000W	3000	2400	2750	2200	12M55D2700E310
SDG3313W	3313	2650	3000	2400	16M55D2900E310
SDG3750W	3750	3000	3250	2600	16M55D3300E310
SDG4125W	4125	3300	3750	3000	16M55D3600E310

Power By Weichai

60HZ

Model	Standby Power (kva)	Standby Power (kw)	Prime Power (kva)	Prime Power (kw)	Engine Model
SDG30W	30	24	25	20	WP2.3D30E201
SDG41W	41	33	38	30	WP2.3D41E201
SDG50W	50	40	44	35	WP2.3D47E201
SDG63W	63	50	50	40	WP2.3D58E201
SDG83W	83	66	75	60	WP4.1D80E201
SDG104W	104	83	90	72	WP4.1D95E201
SDG125W	125	100	113	90	WP4.1D115E201
SDG138W	138	110	125	100	WP6D132E201
SDG165W	165	132	150	120	WP6D158E201
SDG188W	188	150	180	144	WP6D180E201
SDG206W	206	165	188	150	WP10D200E201
SDG250W	250	200	225	180	WP10D238E201
SDG275W	275	220	240	192	WP10D264E201
SDG344W	344	275	300	240	WP10D360E201
SDG413W	413	330	375	300	WP13D385E201
SDG438W	438	350	400	320	WP13D448E201
SDG481W	481	385	438	350	WP13D460E311
SDG550W	550	440	500	400	WP13D510E311
SDG688W	688	550	625	500	6M33D633E201
SDG725W	725	580	650	520	6M33D670E201
SDG750W	750	600	675	540	6M33D710E201
SDG825W	825	660	750	600	6M33D740E311

Power By Yangdong

YANGDONG is a prominent brand known for manufacturing diesel engines, particularly in China. The company specializes in producing a range of engines that are commonly used in agricultural machinery, construction equipment, and various industrial applications.

Reliability: YANGDONG engines are designed for durability and consistent performance, making them suitable for demanding work environments.

Fuel Efficiency: The brand focuses on optimizing fuel consumption, helping users reduce operational costs while maintaining power output.

Versatility: YANGDONG offers a variety of engine models that cater to different power requirements, allowing for use in various machinery and equipment.

Cost-Effectiveness: Generally, YANGDONG engines are positioned as affordable options, providing good value for users looking for efficient diesel power solutions.

Local and Export Markets: While YANGDONG is well-established in the domestic market, it has also expanded its reach to international markets, supplying engines to various countries.

YANGDONG diesel engines are often recognized for their practicality and performance, making them a popular choice among users in agriculture and industry.



Power By Yangdong

50HZ

Model	Standby Power (kva)	Standby Power (kw)	Prime Power (kva)	Prime Power (kw)	Engine Model
SDG10YDM	10	8	9	7	YD380D
SDG11YDM	11	9	10	8	YD385D
SDG14YDM	14	11	13	10	YD480D
SDG15YDM	15	12	14	11	YD485D
SDG17YDM	17	13	15	12	YND485D
SDG21YDM	21	17	19	15	YND490D
SDG22YDM	22	18	20	16	YSD490D
SDG25YDM	25	20	23	18	Y490D
SDG28YDM	28	22	25	20	Y495D
SDG30YDM	30	24	28	22	Y4100D
SDG33YDM	33	26	30	24	Y4102D
SDG40YDM	40	32	36	29	Y4105D
SDG41YDM	41	33	38	30	Y4102ZD
SDG50YDM	50	40	45	36	Y4102ZLD
SDG55YD	55	44	50	40	Y4105ZLD
SDG66YD	66	53	60	48	YD4EZLD

60HZ

Model	Standby Power (kva)	Standby Power (kw)	Prime Power (kva)	Prime Power (kw)	Engine Model
SDG13YDM	13	10	11	9	YD380D
SDG14YDM	14	11	13	10	YD385D
SDG16YDM	16	13	15	12	YD480D
SDG21YDM	21	17	19	15	YD485D
SDG23YDM	23	18	20	16	YND485D
SDG25YDM	25	20	23	18	YND490D
SDG26YDM	26	21	24	19	YSD490D
SDG30YDM	30	24	28	22	Y490D
SDG33YDM	33	26	30	24	Y495D
SDG35YDM	35	28	31	25	Y4100D
SDG41YDM	41	33	38	30	Y4102D
SDG46YDM	46	37	43	34	Y4105D
SDG50YDM	50	40	45	36	Y4102ZD
SDG55YDM	55	44	50	40	Y4102ZLD
SDG63YD	63	50	56	45	Y4105ZLD
SDG78YD	78	62	70	56	YD4EZLD

Power By SDEC

SDEC (Shanghai Diesel Engine Co., Ltd.) is a large state-owned enterprise that focuses on the research and development, production and manufacturing of diesel engines. Founded in 1947, the company has a history of more than 60 years, and its products are widely used in the fields of automobiles, construction machinery, ships and power generation.

The diesel engine series produced by SDEC include H, D, E, G and W series, which are known for their high-precision pressure regulation, excellent dynamic performance, low voltage waveform distortion, high efficiency, reliable operation, long life and good economic performance.

In addition, SDEC's diesel generator sets adopt a maintenance-free battery starting system, and users can start the generator set with simple operations, which greatly improves the convenience of use. These generator sets are widely used in various fields, such as land power generation, ship power, etc.



Power By SDEC

50HZ

Model	Standby Power (kva)	Standby Power (kw)	Prime Power (kva)	Prime Power (kw)	Engine Name
SDG17SM	17	13.2	15	12	4Z2.3-G11
SDG23SM	23	18	20	16	4Z2.7-G11
SDG28SM	28	22	25	20	4Z3.0-G11
SDG34SM	34	27.5	31	25	4Z3.2-G11
SDG44SM	44	35	40	32	4ZT3.2-G11
SDG55S	55	44	50	40	4ZT3.5-G21
SDG69S	69	55	63	50	4ZT4.1-G21
SDG75S	75	60	69	55	4ZTAA4.1-G21
SDG90S	90	72	80	64	4ZTAA4.1-G31
SDG113S	113	90	100	80	SC4H140D2
SDG125S	125	100	113	90	SC4H160D2
SDG138S	138	110	125	100	SC4H180D2
SDG165S	165	132	150	120	SC7H205D2
SDG181S	181	145	163	130	SC7H220D2
SDG206S	206	165	188	150	SC7H250D2
SDG225S	225	180	200	160	SC8D280D2
SDG250S	250	200	225	180	SC9D310D2
SDG275S	275	220	250	200	SC9D340D2
SDG350S	350	280	313	250	SC13G420D2
SDG375S	375	300	350	280	SC12E460D2
SDG400S	400	320	375	300	SC12E480D2
SDG450S	450	360	400	320	SC13E550D2
SDG550S	550	440	500	400	6ETAA12.8-G310
SDG625S	625	500	563	450	SC27G755D2
SDG688S	688	550	625	500	SC27G830D2
SDG750S	750	600	688	550	SC27G900D2
SDG825S	825	660	750	600	6KTAA25-G37
SDG900S	900	720	825	660	6KTAA25-G31
SDG1000S	1000	800	900	720	6KTAA25-G320
SDG1125S	1125	900	1000	800	6KTAA25-G321
SDG1250S	1250	1000	1125	900	6WTAA35-G310
SDG1375S	1375	1100	1250	1000	6WTAA35-G311
SDG1500S	1500	1200	1375	1100	12KTA58-G36
SDG1688S	1688	1350	1563	1250	12KTA58-G35
SDG1875S	1875	1500	1688	1350	12KTA58-G34
SDG2063S	2063	1650	1875	1500	12KTA58-G33
SDG2250S	2250	1800	2000	1600	12KTA58-G32
SDG2500S	2500	2000	2250	1800	12KTA58-G31

Power By SDEC

60HZ

Model	Standby Power (kva)	Standby Power (kw)	Prime Power (kva)	Prime Power (kw)	Engine Name
SDG13S	13	10	11	9	3Z1.1-G42
SDG17S	17	13	15	12	3ZT1.1-G42
SDG22S	22	18	20	16	4Z2.3-G21
SDG28S	28	22	25	20	4Z2.7-G21
SDG33S	33	26	30	24	4Z3.0-G21
SDG44S	44	35	40	32	4Z3.2-G21
SDG48S	48	39	44	35	4ZT3.2-G21
SDG69S	69	55	63	50	4ZT3.5-G21
SDG83S	83	66	75	60	4ZT4.1-G21
SDG100S	100	80	90	72	4ZTAA4.1-G31
SDG125S	125	100	113	90	4HTAA4.3-G21
SDG138S	138	110	125	100	4HTAA4.3-G23
SDG165S	165	132	150	120	6HTAA6.5-G21
SDG175S	175	140	160	128	6HTAA6.5-G22
SDG225S	225	180	206	165	6HTAA6.5-G23
SDG250S	250	200	225	180	6DTAA8.9-G21
SDG275S	275	220	250	200	6DTAA8.9-G24
SDG300S	300	240	275	220	6DTAA8.9-G23
SDG375S	375	300	350	280	6ETAA11.8-G22
SDG450S	450	360	400	320	6ETAA12.8-G22
SDG500S	500	400	450	360	6ETAA12.8-G32
SDG550S	550	440	500	400	6ETAA12.8-G310.1
SDG625S	625	500	563	450	6KTAA25-G311
SDG688S	688	550	625	500	6KTAA25-G310
SDG750S	750	600	700	560	6KTAA25-G39
SDG825S	825	660	750	600	6KTAA25-G32.1
SDG900S	900	720	825	660	6KTAA25-G31.1



Power By Baudouin

BAUDOUIIN is a renowned brand of diesel engines. Founded in 1918 in France, it has a long history and solid reputation. Its engines are known for their high quality and reliability, widely used in marine and power generation fields. In 2009, it was acquired by Weichai Power. BAUDOUIIN engines have advanced technologies, such as the 4M08 series with excellent NVH performance, high combustion efficiency, and advanced fuel injection systems. They also offer a wide power range to meet different application requirements.

Power By Baudouin

50HZ

Model	Standby Power (kva)	Standby Power (kw)	Prime Power (kva)	Prime Power (kw)	Engine Model
SDG21B	21	17	19	15	4M06G20/5
SDG25B	25	20	23	18	4M06G25/5
SDG36B	36	29	33	26	4M06G35/5
SDG44B	44	35	40	32	4M06G44/5
SDG50B	50	40	45	36	4M06G50/5
SDG55B	55	44	50	40	4M06G55/5
SDG69B	69	55	63	50	4M10G70/5
SDG83B	83	66	75	60	4M10G88/5
SDG110B	110	88	100	80	4M10G110/5
SDG149B	149	119	135	108	6M11G150/5
SDG165B	165	132	150	120	6M11G165/5
SDG176B	176	141	160	128	6M11G188/5
SDG220B	220	176	200	160	6M16G220/5
SDG248B	248	198	225	180	6M16G250/5
SDG275B	275	220	250	200	6M16G275/5
SDG303B	303	242	275	220	6M16G300/5
SDG352B	352	282	320	256	6M16G350/5
SDG385B	385	308	350	280	6M21G400/5
SDG440B	440	352	400	320	6M21G440/5
SDG495B	495	396	450	360	6M21G500/5
SDG550B	550	440	500	400	6M21G550/5
SDG660B	660	528	600	480	6M33G660/5
SDG715B	715	572	650	520	6M33G715/5
SDG748B	748	598	680	544	6M33G750/5
SDG825B	825	660	750	600	6M33G825/5
SDG880B	880	704	800	640	8M33G900/5
SDG990B	990	792	900	720	8M33G1000/5
SDG1100B	1100	880	1000	800	8M33G1100/5
SDG1238B	1238	990	1125	900	12M33G1250/5
SDG1375B	1375	1100	1250	1000	12M33G1400/5
SDG1513B	1513	1210	1375	1100	12M33G1500/5
SDG1650B	1650	1320	1500	1200	12M33G1650/5
SDG1925B	1925	1540	1750	1400	16M33G1900/5
SDG2063B	2063	1650	1875	1500	16M33G2000/5
SDG2200B	2200	1760	2000	1600	16M33G2250/5

Power By Baudouin

60HZ

Model	Standby Power (kva)	Standby Power (kw)	Prime Power (kva)	Prime Power (kw)	Engine Model
SDG25B	25	20	23	18	4M06G20/6
SDG32B	32	25	29	23	4M06G25/6
SDG41B	41	33	38	30	4M06G33/6
SDG51B	51	41	46	37	4M06G41/6
SDG62B	62	50	56	45	4M06G50/6
SDG66B	66	53	60	48	4M06G55/6
SDGD99B	99	79	90	72	4M10G83/6
SDG124B	124	99	113	90	4M10G105/6
SDG165B	165	132	150	120	6M11G135/6
SDG198B	198	158	180	144	6M11G160/6
SDG220B	220	176	200	160	6M11G176/6
SDG241B	241	193	219	175	6M16G200/6
SDG264B	264	211	240	192	6M16G220/6
SDG309B	309	248	281	225	6M16G250/6
SDG385B	385	308	350	280	6M16G308/6
SDG413B	413	330	375	300	6M21G330/6
SDG479B	479	383	435	348	6M21G390/6
SDG495B	495	396	450	360	6M21G400/6
SDG550B	550	440	500	400	6M21G460/6
SDG715B	715	572	650	520	6M33G575/6
SDG743B	743	594	675	540	6M33G600/6
SDG791B	791	633	719	575	6M33G633/6
SDG825B	825	660	750	600	6M33G660/6
SDG963B	963	770	875	700	8M33G770/6
SDG990B	990	792	900	720	8M33G800/6
SDG1100B	1100	880	1000	800	8M33G900/6
SDG1251B	1251	1001	1138	910	12M26G1000/6
SDG1375B	1375	1100	1250	1000	12M33G1100/6
SDG1485B	1485	1188	1350	1080	12M33G1200/6
SDG1617B	1617	1294	1470	1176	12M33G1300/6
SDG1650B	1650	1320	1500	1200	12M33G1320/6
SDG2063B	2063	1650	1875	1500	16M33G1650/6
SDG2186B	2186	1749	1988	1590	16M33G1750/6

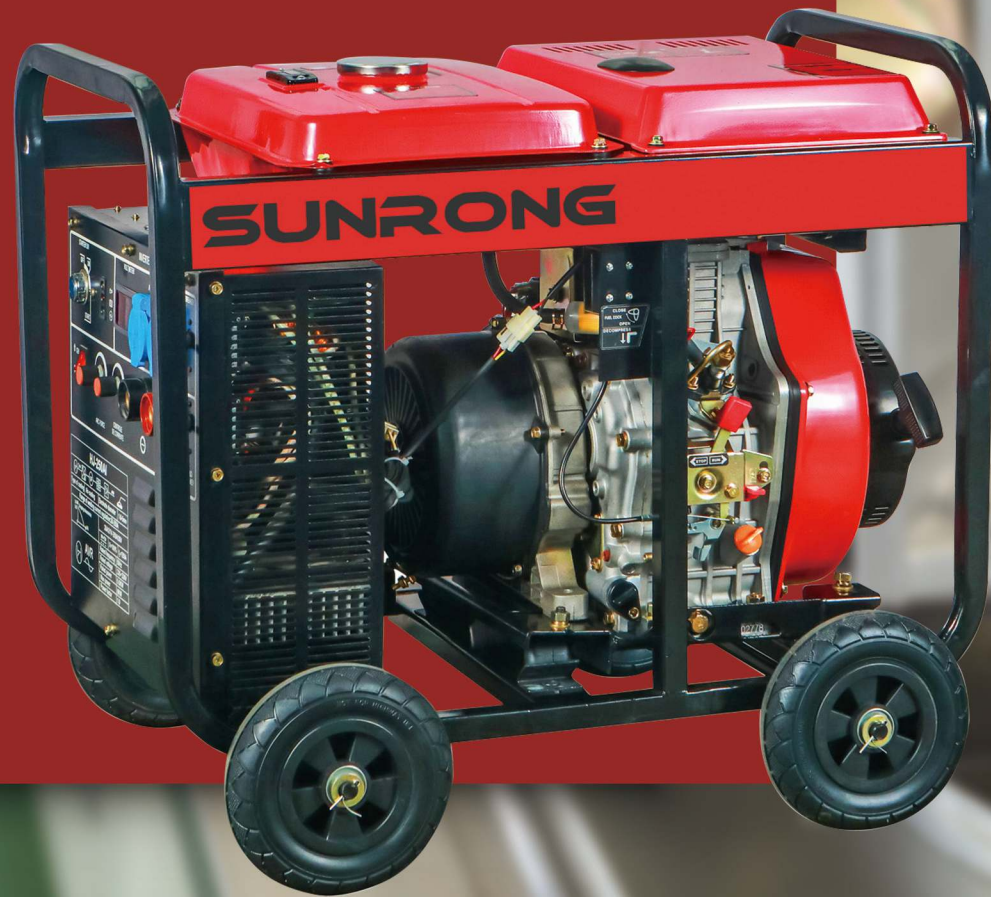
WELDING GENERATOR

Product Features

- One machine for multiple purposes
- Easy and quick start
- Simple operation
- High current & high welding capacity
- Powered by SR POWER' s high-performance diesel engines
- 100% copper motor

Application of welding generator

- Home used welding
- Maintenance station special welding
- Outdoor pipe welding
- Construction site welding
- Professional plate welding
- Rail welding



Welding Generator



MODEL		SDG6500EW		SDG8500EW	
Rated frequency	Hz	50	60	50	60
Rated voltage	V	220, 230, 110/220, 120/240		220, 230, 110/220, 120/240	
Rated power	kVA	1.8	2.0	2.0	2.2
Welding voltage without load	V	55-65		55-65	
Rated current	A	160		160	
Work voltage	V	26-30		26-30	
Current regulation range	A	50-180		50-200	
Welding load continuous ratio		60%		60%	
Phase number		Single phase		Single phase	
Excitation mode		Self-excitation and constant voltage (with AVR)		Self-excitation and constant voltage (with AVR)	
Power factor	cosΦ	1.0		1.0	
Insulation Grade		F		F	
Fuel Tank Capacity	L	12.5		12.5	
Frame Type		25*25mm round tube frame		25*25mm round tube frame	
Engine Model		SD186FAE		SD192FE	
Starting System		Electric start		Electric start	
Engine Type		Single cylinder, 4-stroke, air cooled, direct injection		Single cylinder, 4-stroke, air cooled, direct injection	
Bore x stroke	mm	86×72		92×75	
Displacement	ml	418		499	
Compression Ratio		20:1		20:1	
Ration Rotation Speed	rpm	3000		3000	
Rated power	kW	5.8		7.6	
Power-take-off		Crankshaft		Crankshaft	
Lube Oil Capacity	L	1.65		1.65	
Fuel type		DIESEL: 0 # (summer) -10 # (winter) -35 # (chillness)		DIESEL: 0 # (summer) -10 # (winter) -35 # (chillness)	
Lube oil type		About CD grade or SAE 10W-30、15W-40		About CD grade or SAE 10W-30、15W-40	
Low Oil Pressure Alarm System		With		With	
Overall Dimension (L*W*H)	mm	720*520*630		720*520*630	
Net weight	kg	115		120	

WATER PUMP

Product Features

- Powered by SR Power's high-performance diesel engines
- Full frame protection greatly reduces vibration
- Easy starting
- Simple operation
- Low fuel consumption
- Easy maintenance & longer service life
- Low pollution
- Durable construction

Application of pump

- Agricultural irrigation
- Fire fighting
- Municipal projects
- Drain off floodwaters
- Mine use pumping sand
- Pumping chemical liquid



Water Pump



Model		SDP50(E)	SDP80(E)	SDP100(E)	SDP150(E)	SDP200E
Suction/Discharge Port Diameter	mm (in)	50(2")	80(3")	100(4")	150(6")	200(8")
Max. Flow	m ³ /h	36	60	96	150	260
Max. Head	m	25	26	22	20	19
Self-priming Time	s/4m	80	120	220	250	300
Max. Suction Head	m	8	8	8	6	2
Fuel Tank Capacity	L	2.5L/12.5L	3.5L/12.5L	5.5L/12.5L	5.5L/12.5L	12.5L
Engine Model		SD173F(E)	SD178F(E)	SD186FA(E)	SD192F(E)	SD2V95F
Starting System		Manual / Electric				Electric
Engine Type		Single-Cylinder, 4-Stroke, Air-cooled, Vertical				2-Cylinder, 4-Stroke, Air-cooled, Vertical
Broke*Stroke	mm	73*59	78*62	86*72	92*75	95*88
Displacement	L	0.247	0.296	0.418	0.499	1.247
Compression Ratio		20:1	20:1	20:1	20:1	20:1
Rated Rotation Speed	rpm	3600	3600	3600	3600	3600
Rated Power	kW	3.8	4	6.6	8.6	21
Lube Oil Capacity	L	0.75	1.1	1.65	1.65	3.2
Fuel Type		0#(summer), - 10#(winter) Diesel				
Lube oil Type		SAE10W30 (above CD grade)				
Overall dimension (L x W x H)	mm	500*420*530	570*465*560	660*480*610	790*580*780	900*790*800
Net weight	kg	37	45	62	93	130

Water Pump



Model		SDP40H(E)	SDP50H(E)
Suction/Discharge Port Diameter	mm (in)	40 (1.5")	50 (2")
Max. Flow	m ³ /h	30	22
Max. Head	m	65	80
Self-priming Time	s/4m	120	180
Max. Suction Head	m	9	9
Fuel Tank Capacity	L	3.5/12	5.5/12
Engine Type		SD178F(E)	SD186FA(E)
Starting System		Manual / Electric	Manual / Electric
Engine Type		Single-Cylinder, 4-Stroke, Air-cooled, Vertical	Single-Cylinder, 4-Stroke, Air-cooled, Vertical
Broke*Stroke	mm	78*62	86*72
Displacement	L	0.296	0.418
Compression Ratio		20:1	20:1
Rated Rotation Speed	rpm	3600	3600
Rated Power	kW	4	6.6
Lube Oil Capacity	L	1.1	1.65
Fuel Type		0#(summer), - 10#(winter) Diesel	0#(summer), - 10#(winter) Diesel
Lube oil Type		SAE10W30 (above CD grade)	SAE10W30 (above CD grade)
Overall dimension (L x W x H)	mm	570*465*670	655*480*720
Net weight	kg	47	67

Water Pump



Model		SDP40C(E)	SDP50C(E)	SDP80C(E)	SDP100C(E)
Suction/Discharge Port Diameter	mm (in)	40(1.5"*1.5")	50(2"*2")	80(3"*3")	100 (4"*4")
Displacement Q.Max	m ³ /h	24	32	44	108
Lift H.max	m	70	88	90	40
Max. Suction Head	m	8	8	8	8
Engine Model		SD173F(E)	SD178F(E)	SD186FA(E)	SD192F(E)
Starting System		Manual / Electric			
Engine Type		Single-Cylinder, 4-Stroke, Air-cooled, Vertical			
Fuel Tank Capacity	L	2.5	3.5	5.5	5.5
Broke*Stroke	mm	73*59	78*62	88*75	92*75
Displacement	L	0.247	0.296	0.418	0.499
Compression Ratio		20:1	20:1	20:1	20:1
Rated Rotation Speed	rpm	3600	3600	3600	3600
Rated Power	kW	3.8	4	6.6	8.6
Lube Oil Capacity	L	0.75	1.1	1.65	1.65
Fuel Type		0#(summer), - 10#(winter) Diesel			
Lube oil Type		SAE10W30 (above CD grade)			
Overall dimension (L x W x H)	mm	570*460*680	570*460*680	570*460*720	570*495*720
Net weight	kg	65	75	78	85